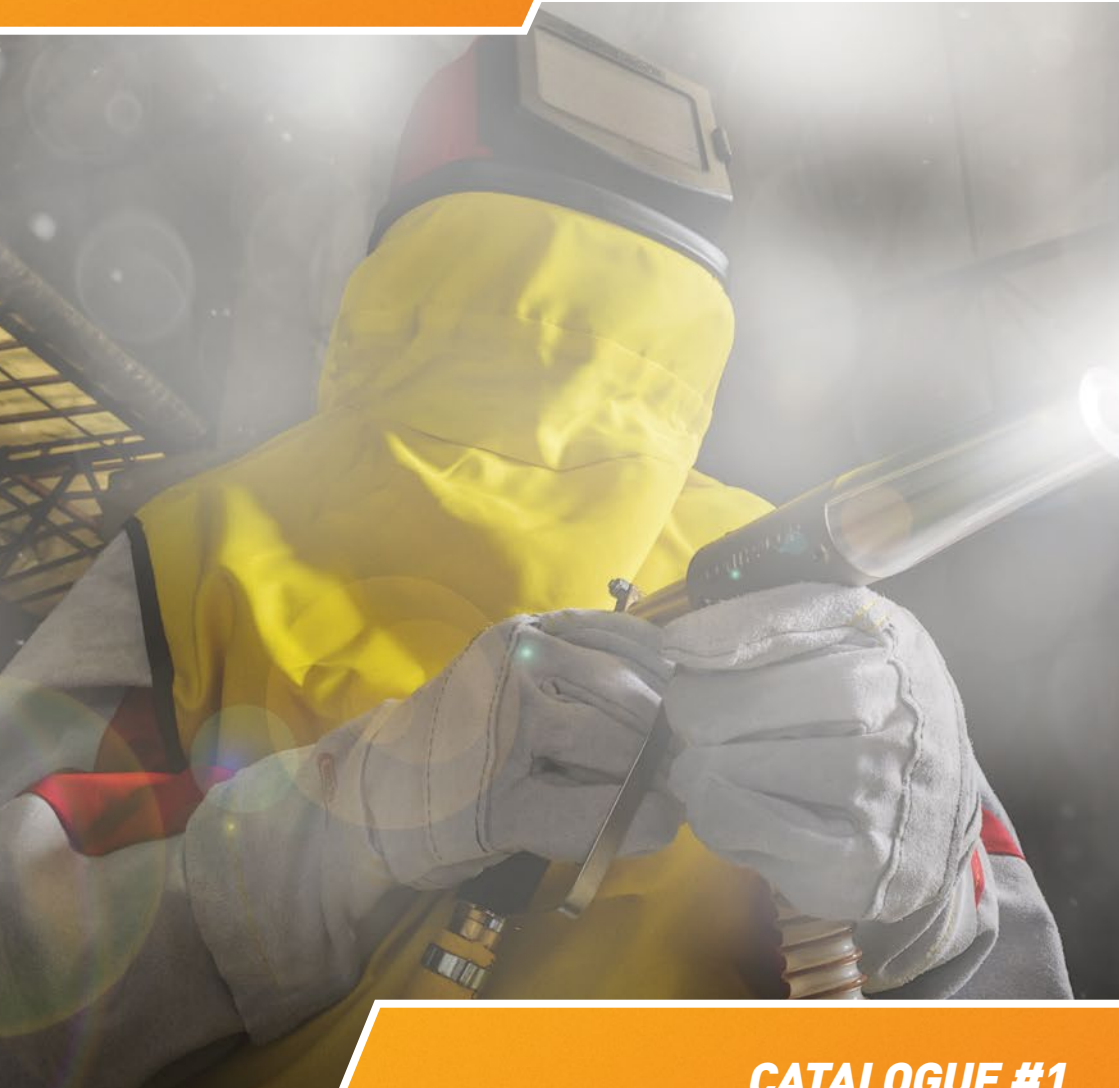


CONTRACOR®



CATALOGUE #1

**PERSONAL
PROTECTIVE EQUIPMENT (PPE)
FOR ABRASIVE BLASTING**

TABLE OF CONTENTS

PERSONAL PROTECTIVE EQUIPMENT for abrasive blasting	3
Blast helmet Comfort	4
Blast helmet Aspect	6
Blast Overall, Leather/Cotton Heavy-Duty	8
Blast Overall, sailcloth / cotton Light-duty	10
Breathing Air Filter, 2 Outputs BAF	12
Air conditioner cold /hot for blast helmets CCT	14
Breathing Air Hose BAH	15
Leather cape for Comfort / Aspect	16

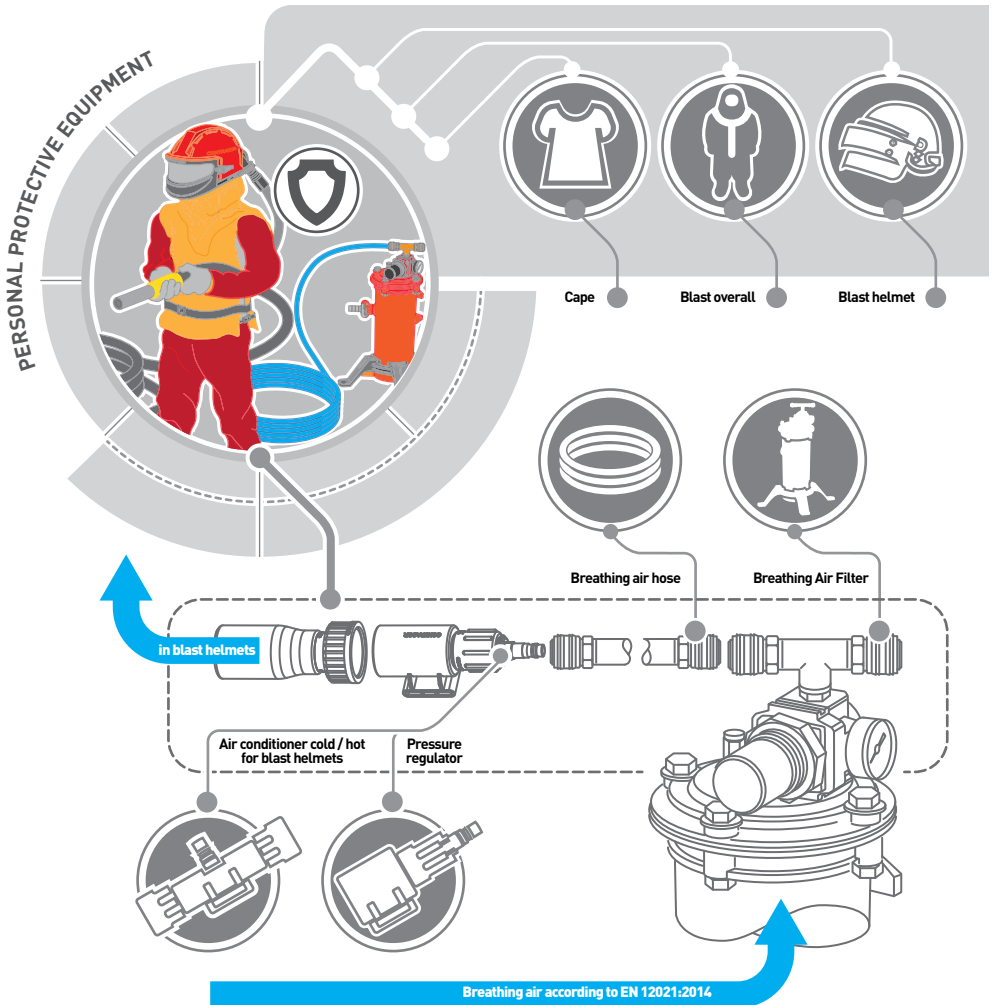
This Catalogue is valid from 01.05.2024.

All previous catalogues lose their validity with the publication of the new catalogue.

Technical characteristics, specifications and details published in this catalogue are subject to change without notice.

PERSONAL PROTECTIVE EQUIPMENT for abrasive blasting

Contracor offers a wide choice of Personal Protective Equipment (PPE) for safe abrasive blasting. Various blast helmets and capes types, professional and seasonal blast overalls and gloves, breathing air filters, air conditioning devices, special breathing air hoses.



Blast helmet Comfort

This very comfortable, lightweight and value-formoney hood is suitable for any kind of abrasive blasting work. Its design ensures constant airflow to the visor in order to prevent misting. The Comfort hood is equipped with a pressure regulator, an airflow indicator and a cape. Easy and sure locking window frame. Air fl ow indicator for safety. 6-point nylon suspension have quick and easy adjustments. Pressure regulator. Durable nylon cape. Handle for easy transportation. Exchangeable cotton neck seal.

Advantages



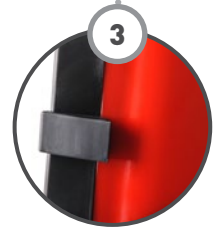
1. Nylon suspension.

6-point nylon suspension have quick and easy adjustments.



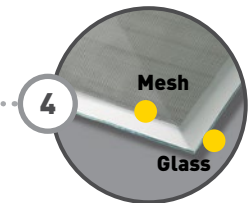
2. Handle.

Handle for easy transportation.



3. Locking window frame.

Easy and sure locking window frame.



4. Disposable lenses.

In Comfort blast helmet regular glass, protected with a stainless steel wire mesh screen, is used as disposable lens. Replacement is easy and cheap, as a simple glass plate can be cut to size and used as replacement.

Technical data

Standard:	DIN EN 14594:2018
Min. operating pressure:	2.5 bar
Max. operating pressure:	5.0 bar
Min. airflow with regulator at 2,5 bar:	165 l/min
Max. airflow with regulator at 5,0 bar:	320 l/min
Min. ambient temperature:	-10°C
Max. ambient temperature:	+60°C
Maximum hose length:	40 m
Noise level with regulator on maximum:	75 dB(A)



Order code	Model	Description
10130810	Comfort	Blast Helmet, durable nylon cape

Blast helmet Aspect

This very comfortable, lightweight and value-for-money helmet is suitable for any kind of abrasive blasting work. The helmet is designed with a wide viewing window. This is an important feature when the operator's movement is limited, e.g. in blasting rooms, while cleaning the internal surfaces of reservoirs, holds, etc. The robust, durable shell of the Aspect blast helmet ensures operator security and a long service life of the helmet, whilst an air baffle delivers a constant flow of air to the operator's head and face to reduce fatigue, prevent misting and increase productivity and safety. The top of the cape is protected from ricochet of blast material by an extended window frame. The embedding of media between the lenses is prevented by an integral 1"-deep visor. Easy closing of the window through a slot which aligns the closing latch and tab. The cape is fixed to the bottom rim of the helmet via an adjustable ratchet buckle, which ensures a secure fit and easy replacement. High operator visibility and security are provided by two lenses and a wire mesh screen.

Advantages



1. Closing latch and tab.

Easy closing of the window through a slot which aligns the closing latch and tab.



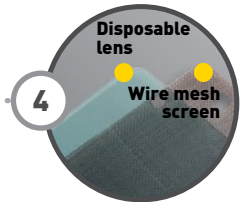
2. Adjustable ratchet buckle.

The cape is fixed to the bottom rim of the helmet via an adjustable ratchet buckle, which ensures a secure fit and easy replacement.



3. Deep visor.

The embedding of media between the lenses is prevented by an integral 1"-deep visor.



4. Disposable lenses.

In Aspect blast helmet disposable clear acetate lenses protected by a stainless steel wire mesh screen are used. Disposable lenses can be exchanged in a matter of seconds, and are available in practical packs with 50pcs.

Technical data

Standard:	DIN EN 14594:2018
Min. operating pressure:	2.5 bar
Max. operating pressure:	5.0 bar
Min. airflow with regulator at 2,5 bar:	165 l/min
Max. airflow with regulator at 5,0 bar:	320 l/min
Min. ambient temperature:	-10°C
Max. ambient temperature:	+60°C
Maximum hose length:	40 m
Noise level with regulator on maximum:	75 dB(A)



Order code	Model	Description
10130830	Aspect	Blast Helmet, durable nylon cape
10130602		Disposable lenses, pack 50 pcs.

Blast Overall, Leather/Cotton Heavy-Duty

The Contracor heavy-duty blast overall with gauntletstyle leather gloves protect the operator from rebounding abrasive media. The arms and legs are protected by durable leather panels, while heavy-duty breathable cotton fabric on the back permits an air-flow, increasing operator comfort. The Contracor heavy-duty blast overall is equipped with both zip and Velcro closures for double dust protection, elastic seals around the arms and fastenings on the pants to keep out dust and abrasive. Double stitching on the overall ensures long service life.

Advantages



1

1. Double Dust Protection.

Both zip and velcro closure for double dust protection.



2

2. Elastic Seals.

Elastic seals around the arms.



3

3. Fastenings on the pants.

Fastenings on the pants prevent the entry of dust under the clothing.



4

4. Double-Seamed.

Double-seamed for more durability.



Design features



Durable leather panels protect arms and legs, cotton back improves operator comfort



Double stitching for long service life



Gauntlet gloves protect hands and wrist



Adjustable straps on cuffs help keep dust and abrasive operator

Technical data

Sizes: 50(S) / 52(M) / 54(L) / 56(XL) / 58(XXL) / 60(XXXL)

Material: leather / cotton

Certificated to ISO 14877:2002.

Protective clothing for abrasive blasting operations using granular abrasives.



Order code	Size	Description
10130700	50 (S)	Heavy-Duty Blast Overall, Leather / Cotton, incl. gloves. Cert. to ISO14877:2002
10130701	52 (M)	Heavy-Duty Blast Overall, Leather / Cotton, incl. gloves. Cert. to ISO14877:2002
10130702	54 (L)	Heavy-Duty Blast Overall, Leather / Cotton, incl. gloves. Cert. to ISO14877:2002
10130703	56 (XL)	Heavy-Duty Blast Overall, Leather / Cotton, incl. gloves. Cert. to ISO14877:2002
10130704	58 (XXL)	Heavy-Duty Blast Overall, Leather / Cotton, incl. gloves. Cert. to ISO14877:2002
10130705	60 (XXXL)	Heavy-Duty Blast Overall, Leather / Cotton, incl. gloves. Cert. to ISO14877:2002
10130710		Long sleeves leather gloves. Cert. to ISO14877:2002

Blast Overall, sailcloth / cotton Light-duty

The Contracor light-duty blast overall protects the operator from rebounding abrasive media. It is an inexpensive substitute for a heavy-duty overall, especially for short-term work or non-blast personnel working intermittently at a blast site. Through its lighter weight, the light-duty overall is more comfortable to wear in hot climates and in summer. The sailcloth and cotton fabrics are easily machine washable. After a job involving toxic elements, discarding a light-duty overall is more economically sensible than throwing a heavy-duty overall away.

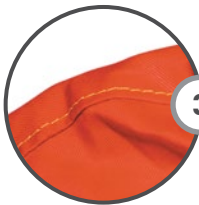
Advantages



1

1. Double Dust Protection.

Both zip and velcro closure for double dust protection.



3

3. Double-Seamed.

Double-seamed for more durability.



2

2. Elastic Seals.

Elastic seals around the arms.

Design features



Weights and costs less than Contracor heavy-duty blast overall



Sailcloth and cotton construction is easily machine washable.



Comfortable to use in the summer time or in the countries with hot climate

Technical data

Sizes: 50(S) / 52(M) / 54(L) / 56(XL) / 58(XXL) / 60(XXXL)

Material: sailcloth / cotton

Certificated to ISO 14877:2002.

Protective clothing for abrasive blasting operations using granular abrasives.



Order code	Size	Description
10130780	50 (S)	Light blast overall, sailcloth / cotton, incl. gloves, Cert. to ISO 14877:2002
10130781	52 (M)	Light blast overall, sailcloth / cotton, incl. gloves, Cert. to ISO 14877:2002
10130782	54 (L)	Light blast overall, sailcloth / cotton, incl. gloves, Cert. to ISO 14877:2002
10130783	56 (XL)	Light blast overall, sailcloth / cotton, incl. gloves, Cert. to ISO 14877:2002
10130784	58 (XXL)	Light blast overall, sailcloth / cotton, incl. gloves, Cert. to ISO 14877:2002
10130785	60 (XXXL)	Light blast overall, sailcloth / cotton, incl. gloves, Cert. to ISO 14877:2002
10130710		Long sleeves leather gloves, grey, Cert. to ISO 14877:2002

Breathing Air Filter, 2 Outputs BAF

The BAF filter does not remove carbon monoxide (CO) and other toxic gases.

The BAF breathing air filter is used, in conjunction with other safeguards, for supplying clean air to the blasting hood. The BAF filter is designed to remove condensate and up to 98% of particles having a size of 0,5 microns or less.

A filter only needs to be bought once. The cartridge alone is subject to regular replacement. A filter can be additionally equipped for operation by two or more operators.

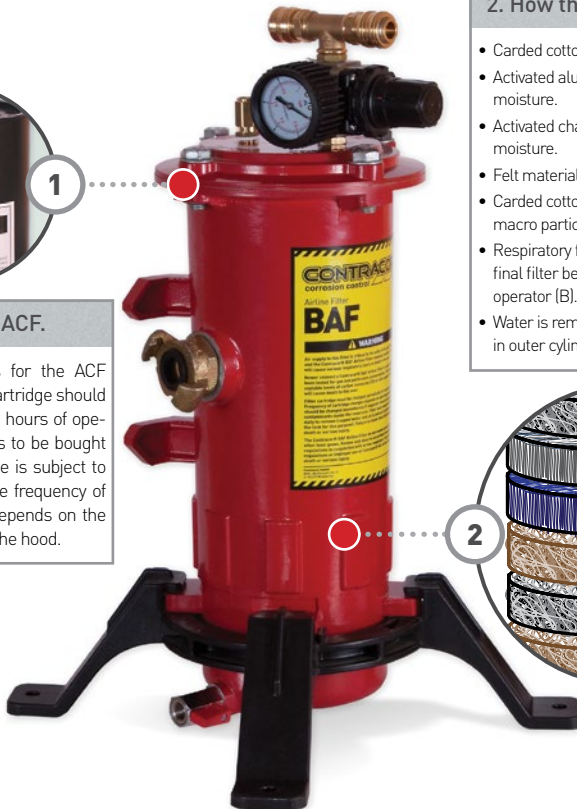
Advantages



1

1. Cartridge ACF.

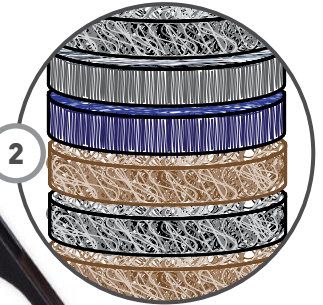
Replacement cartridges for the ACF breathing air filter. The cartridge should be replaced after ca. 450 hours of operation. A filter only needs to be bought once. The cartridge alone is subject to regular replacement. The frequency of cartridge replacement depends on the quality of air supplied to the hood.



2. How the cartridge works.

- Carded cotton removes macro particles.
- Activated alumina absorbs oil and moisture.
- Activated charcoal removes odors and moisture.
- Felt material removes macro particles.
- Carded cotton additionally removes macro particles.
- Respiratory felt at final stage acts as final filter before air is transferred to operator (B).
- Water is removed by vortex action of air in outer cylinder.

2



Technical data

Output:	2x quick connect couplings (F)
Input:	1x claw coupling, min. hose I.D. 3/4"
Max. input pressure:	8 bar
Min. output pressure:	circa 6 bar (according to the blast helmet requirements)
Cartridge exchange interval:	450 hours



Order code	Model	Description
10130400	BAF-1	Air Filter. Complete package incl. 2 outputs, pressure regulator, drain valve, safety valve
10130401	ACF	Air Filter Cartridge

Air conditioner cold /hot for blast helmets CCT

The output temperature of the CCT air conditioner is up to $\pm 20^{\circ}\text{C}$ below or above the input temperature.

The CCT breathing air conditioner functions according to the principle of airflow separation. It is intended for heating or cooling breathing air which travels from the breathing air filter to the blasting hood.

Technical data

Min. operating pressure:	2.5 bar
Max. operating pressure:	5.0 bar
Most effective range:	4.5 - 5.0 bar
Min. airflow with regulator at 2,5 bar:	165 NI/min
Max. airflow with regulator at 5,0 bar:	320 NI/min
Min. ambient temperature:	-10°C
Max. ambient temperature:	+60°C
Max. BAH breathing air supply hose length:	40 m
Noise level at 5.0 bar and maximum air flow:	90 dB(A)



Order code	Model	Description
10130840	CCT	Air conditioner cold /hot for blast helmets COMFORT and ASPECT

Breathing Air Hose BAH

For connection between blasting hood and airline filter BAF. Special thick-wall hose made from non-toxic materials. Thick-walls prevents the hose from buckling and pinching. Certificated according to DIN EN 14594:2018 Respiratory protective devices - Continuous flow compressed air line breathing devices.



Technical data

Hose diameter ID / OD:	9 mm / 15 mm
Max. working pressure:	15 bar
Min. burst pressure:	60 bar
Approval:	Breathing air
Standard:	DIN EN 14594:2018
Temperature range:	-20°C / +70°C
Hose features:	Non-toxic, antistatic
Tube:	PVC, black, smooth
Cover:	PVC, blue, smooth



Order code	Model	Description
10130909	BAH	Breathing air hose 9x15mm, with mounted fittings, 20 m. Roll
10130900	BAH	Breathing air hose 9x15mm, with mounted fittings, 40 m. Roll

Leather cape for Comfort / Aspect

Leather cape is designed for use with helmets Comfort and Aspect. Protects the operator from dust and from abrasive ricochet. Supplied as an additional option to the standard helmet.

Technical data

Material: Leather
For helmets: Comfort / Aspect



Order code	Model	Description
10130023		Leather cape for Comfort / Aspect



Trykluftshop ApS - 9200 Aalborg SV - Denmark + 82 10 70 20

www.trykluftshop.dk