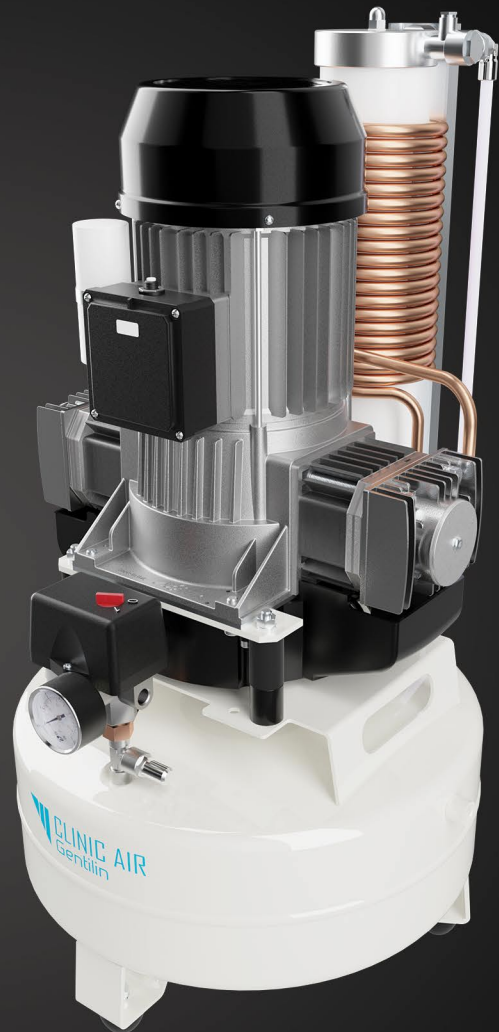


Oil-Free Compressors | EPOXY SERIES



CLINIC 3.25



CLINIC DRY 3.25

*Used in intermittent-continuous, quiet applications.
Powering dentistry and veterinary procedures.*

Clinic 3.25 Models are designed to be used in dentistry and veterinary procedures. They are especially suited for heavy-duty use that range from intermittent to continuous operation, particularly in noise sensitive environments.

These compressors are powered by the patented Axxer Motion mechanism: an oil-free reciprocating piston that features a low wear-and-tear movement resulting in no breakdowns or unnerving maintenance requirements.

In addition, the Clinic Dry 3.25 model is equipped with an adsorption drying system that removes condensate and provides clean air.

KEY FEATURES

SERIES	Epoxy
MANUFACTURING	Made in Italy
WARRANTY	3 years
STEEL TANK	Epoxy-coated, internal/external
POWERED BY	Axxer Motion pump
MAX PRESSURE	10 bars
WORK	Medium-duty, intermittent use
PUMP MECHANISM	Oil-free
PRESSURE SWITCH	Solenoid-operated
MAINTENANCE	None up to 3000 hours*
RPM	1400
DUTY CYCLE	Clinic 3.25: S1-100%, continuous Clinic Dry 3.25: S3-70%, intermitt.
ADSORPTION DRYER	Dew Point -20°C

* Based on 10 bars continuous operations at 40°C

TECHNICAL DATA

	Users	Voltage - Frequency	Power	Tank capacity	Axxer Motion pump	Cylinders	Air Delivery @ 5 bars	Sound level
CLINIC 3.25 [†] No Dryer	2 + 1	230V-50Hz	1,80 kW (2,50 hp)	24-liter	CSK240	2	150 L/min	64 dB(A)
CLINIC DRY 3.25 Adsorption Dryer	2	230V-50Hz	1,80 kW (2,50 hp)	24-liter	CSK240	2	150 L/min	64 dB(A)
MOB/CMF24	Comfort Cabinet ‡ (for 24-liter, 230V-50Hz compressors)							

[†] Various voltages and frequencies available. See www.clinic-air.com.

[‡] Results in 12 dB(A) noise reduction. Uses 84209 Pressure Gauge and Regulator – order separately.

[§] Add-on Option for model: 84210 Tank Automatic Drain Valve.

Note: All Epoxy Series compressors can be ordered with an integrated Hour Meter.

SERVICE PARTS

84303	Maintenance Kit
83214	Piston Kit
83045/1	Air Intake Paper Filter
84053/1	Silica Gel Kit (DRY model)
83124	Shaft Puller
83136	Piston Puller

	PRODUCT		PACKAGING	
	H x L x W	kg	H x L x W	kg
CLINIC 3.25	74 x 42 x 42	37	90 x 57 x 68	46
CLINIC DRY 3.25	82 x 50 x 42	42	90 x 57 x 68	51
MOB/CMF24	87 x 62 x 62	26	91 x 80 x 31	36